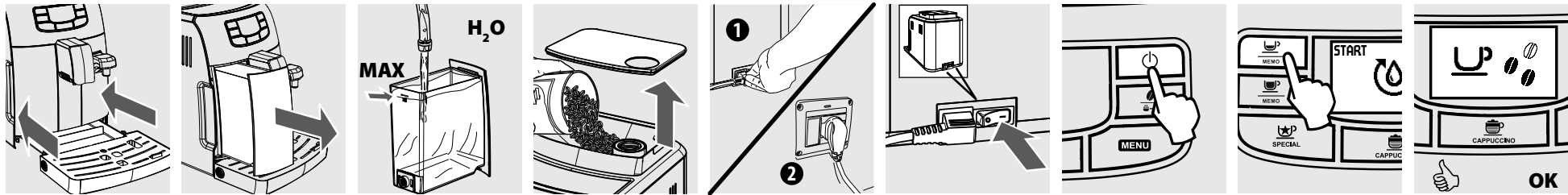


Quick Start Guide Intelial One Touch Cappuccino - HD8753

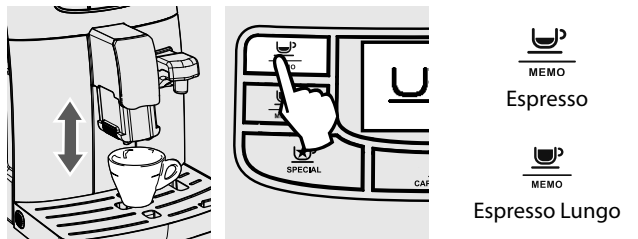
Register your product to receive tips and tricks and descaling reminder at www.philips.com/welcome



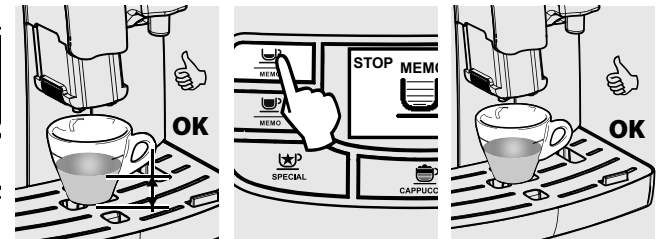
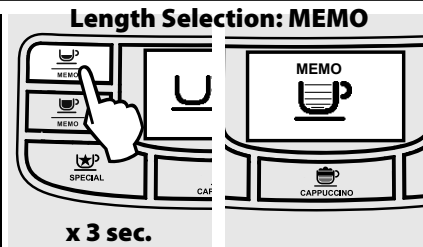
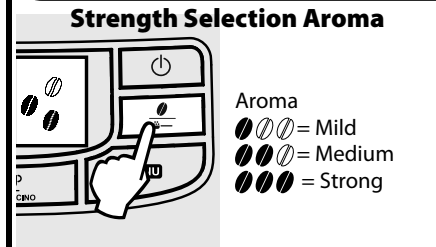
FIRST INSTALLATION



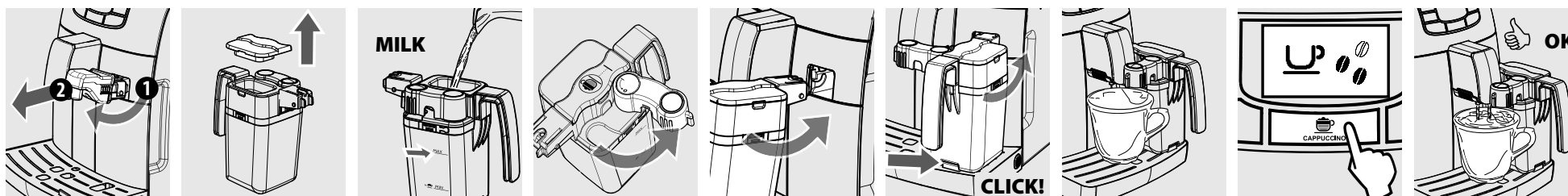
FIRST ESPRESSO



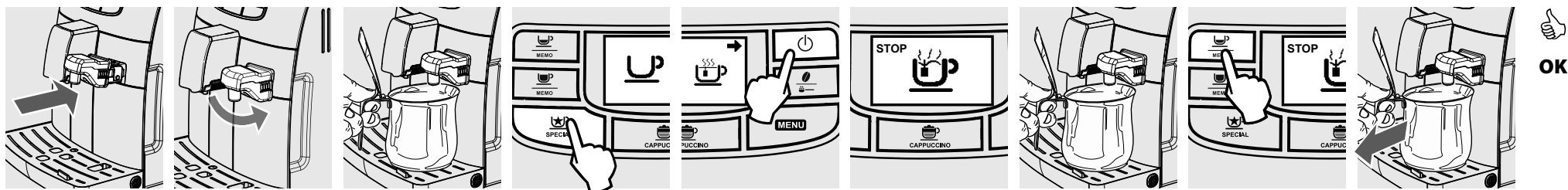
"MY" ESPRESSO



FIRST CAPPUCCINO



HOT WATER



Please refer to user manual for more informations or go to www.philips.com/support

Quick Start Guide Intelial One Touch Cappuccino - HD8753



DESCALING - 30 min.

Keep the machine at its best

The advanced electronics tells you on the display of the machine (in clear symbols) when descaling is needed.

If you don't descale regularly, your appliance will ultimately stop working. This is not covered by your warranty.

Conservare la macchina nelle migliori condizioni

L'elettronica avanzata indica tramite il display della macchina (a chiari simboli) quando è necessario eseguire la decalcificazione.

Se la decalcificazione non avviene regolarmente, l'apparecchio smetterà di funzionare. Condizione non coperta da garanzia.

Die Maschine sollte optimal gepflegt werden. Die moderne Elektronik weist über das Display der Maschine (mit eindeutigen Symbolen) darauf hin, wenn die Durchführung einer Entkalkung erforderlich ist.

Wird die Entkalkung nicht regelmäßig vorgenommen, wird der Betrieb des Geräts bis hin zum Ausfall beeinträchtigt. Dieser Ausfall wird nicht von der Garantie gedeckt.

Conservar la machine dans les meilleures conditions possibles

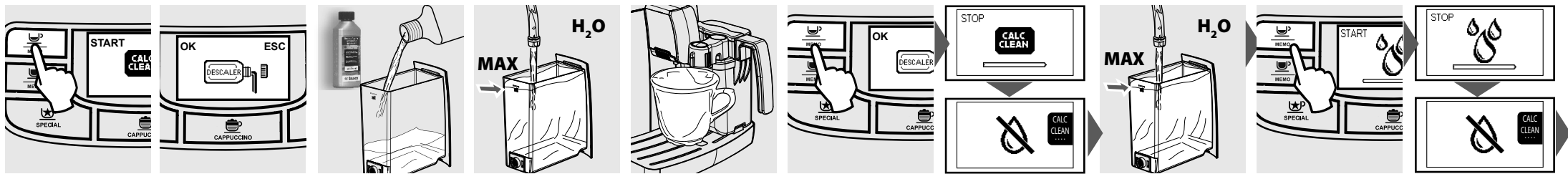
L'électronique avancée dont elle se compose indique très clairement le moment où il est nécessaire d'effectuer le détartrage.

Si le détartrage n'a lieu régulièrement, l'appareil cessera de fonctionner, situation qui ne prévoit pas de garantie.

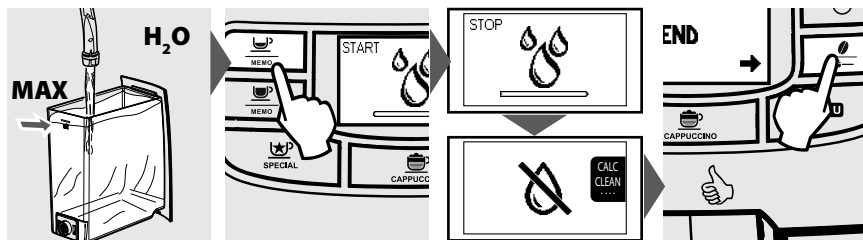
Guardar la máquina en las mejores condiciones posibles

Gracias a su avanzada electrónica, la pantalla de la máquina indica (con símbolos claros) cuándo es necesario realizar la descalcificación.

Si la descalcificación no se realiza regularmente, la máquina dejará de funcionar. Condición no cubierta por la garantía.

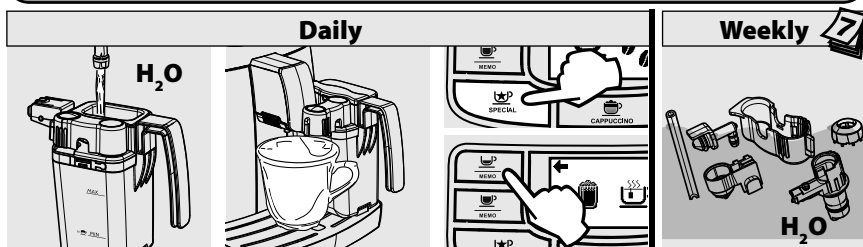


MENU FOR CUSTOMIZATION AND MAINTENANCE

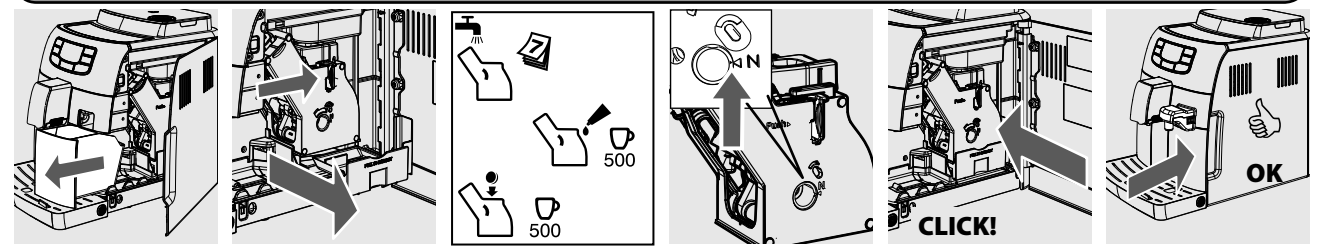


+ MAX MED MIN	ESC	+ 180' 60' 30' 15'	ESC	+ Display contrast	ESC	+ 4 3 2 1	ESC	+ ON OFF	ESC	START CALC CLEAN	ESC	+ YES NO	ESC	DEFAULT SETTINGS
Coffee Temperature		Stand-by time set		Display contrast		Water hardness		Water filter "INTENZA+"		Descaling Menu		Default setting machine		

MILK CARAFE CLEANING



BREWING UNIT CLEANING



For more information on installation or usage please contact the Philips consumer care help line :

DE: 0800 000 7520
AT: 0800 180 016
CH: 0800 002 050
FR: 0157324051
IT: 02 45279074

ES: 902881082
GR: 2111983029
BE: 070 700 036
NL: 0900 202 11 77
SV: 0857929067

NO: 22971950
FI: 09 88 62 50 41
DA: 35 44 41 30
RA: 0800-888-7532

For other phone numbers, please refer to the Warranty booklet or go to
www.philips.com/support